

TK/SF/DESTU

Termination methods for use with Heat Trace's range of heating tapes

TERMINATION METHODS

- Available for use in safe and hazardous areas
- All termination kits are provided with simple step-by-step assembly instructions
- Four styles of termination and splice provides options to suit all applications
- Effective electrical connections which have been rigorously tested to ensure long term reliability

STANDARD TERMINATION

Standard termination kits include a plastic (or metal) gland, either of which may be adapted to suit safe area or hazardous area conditions. A silicone end boot to provide a safe and electrically sound termination of the remote end of the heating tape is also provided. Crimps, Caution (warning) labels and instructions are included as standard.



Hazardous or Safe Area Termination using JB9000/EX Junction Box

STRIPFREE TERMINATION

Heat Trace's StripFree universal connection system provides the installer with a fast and simple method of power, in-line and T-splice connection methods for self-regulating heating tapes. The StripFree unit may also be used for constant power heaters. Easy to follow, step-by-step instructions are provided. (See separate data sheet)



Hazardous or Safe Area Termination using StripFree Unit

DESTU TERMINATION

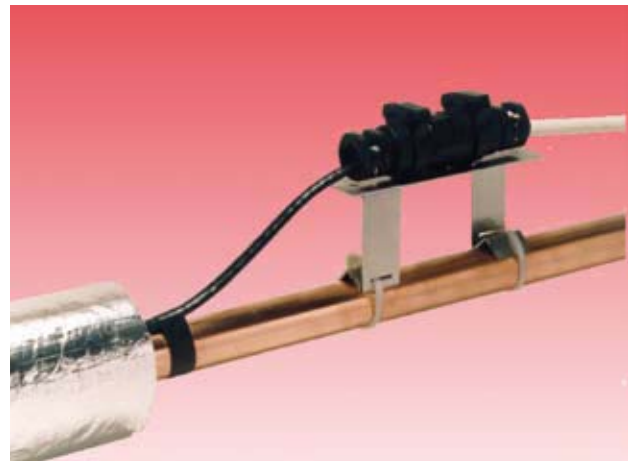
The DESTU system, for safe and hazardous areas, reduces the risk of damage to heating tapes at termination points as it avoids exposing the heating tape as it emerges from the thermal insulation for connection into the junction box. DESTU is available for power termination, in-line splice and tee splice terminations.



Hazardous or Safe Area Termination using DJB9000 & DESTU

MICRO UNI-CLIP TERMINATION

The Micro Uni-Clip termination system may be used for power termination, in-line splicing and tee-splicing of Heat Trace's FREEZSTOP MICRO self-regulating heating cable. Simple step-by-step installation instructions are provided.



Safe Area Termination using the Micro Uni-Clip

| Product | Cable Ref | Termination Kit Reference | SF-P SF-T | SF-E | BPS # | BES # | DESTU Seal | Plastic Gland | Brass Gland |
|----------------------|-----------|---------------------------|--------------|------|-------|-------|------------|---------------|--------------|
| Freezstop Micro | FSM-CT | UC/M | -- | BLUE | 1 | 1 | DS1 | PGS1 | BGS3 |
| | FSM-CF | UC/M | -- | BLUE | 1 | 1 | DS1 | PGS1 | BGS3 |
| Freezstop Lite Extra | FSLE-C | TK/FSLE | -- | -- | 1 | 1 | DS4 | PGS2 | BGS3 |
| | FSLE-CT | TK/FSLE/O | ✓ | BLUE | 1 | 2 | DS5 | PGS1 | BGS3 |
| | FSLE-CF | TK/FSLE/O | ✓ | BLUE | 1 | 2 | DS5 | PGS1 | BGS3 |
| Freezstop Regular | FSR-C | TK/FSR | -- | -- | 2 | 2 | DS4 | PGS3 | BGS3 |
| | FSR-CT | TK/FS/O | ✓ | RED | 2 | 3 | DS5 | PGS3 | BGS2 |
| | FSR-CF | TK/FS/O | ✓ | RED | 2 | 3 | DS5 | PGS3 | BGS2 |
| Freezstop Extra | FSE-C | TK/FSR | -- | -- | 2 | 2 | DS4 | PGS3 | BGS3 |
| | FSE-CT | TK/FS/O | ✓ | RED | 2 | 3 | DS5 | PGS3 | BGS2 |
| | FSE-CF | TK/FS/O | ✓ | RED | 2 | 3 | DS5 | PGS3 | BGS2 |
| Freezstop Plus | FSP-C | TK/FSP | -- | -- | 2 | 2 | DS4 | PGS1 | BGS3 |
| | FSP-CF | TK/FS/O | ✓ | RED | 2 | 3 | DS5 | PGS3 | BGS2 |
| | 50FSPw-C | TK/FSW | -- | - | 2 | 2 | DS5 | PGS5 | -- |
| | 50FSPw-CF | TK/FSW/O | ✓ | RED | 2 | 3 | DS5 | PGS5 | BGS4 |
| Freezstop Super | FSS-C | TK/FSS | -- | -- | 1 | 1 | DS4 | PGS1 | BGS3 |
| | FSS-CF | TK/FS/O | ✓ | RED | 2 | 3 | DS5 | PGS1 | BGS3 |
| | FSS-N | TK/FSS | -- | -- | 1 | 1 | DS4 | PGS1 | BGS3 |
| | FSS-NF | TK/FS/O | ✓ | RED | 2 | 3 | DS5 | PGS1 | BGS3 |
| Hotwat Regular | HWR-T | TK/FS/O | ✓ | RED | 2 | 3 | DS5 | PGS3 | -- |
| Hotwat Plus | HWP-T | TK/FS/O | ✓ | RED | 2 | 3 | DS6 | PGS4 | -- |
| G-Trace extra | GTe | TK/FSLE/O | ✓ | BLUE | 1 | 2 | DS5 | PGS1 | -- |
| Floorwarm | FW-A | TK/FWA | -- | -- | -- | 2 | -- | -- | -- |
| | FW-C | TK/FWC | -- | -- | -- | 1 | -- | -- | -- |
| SnoMelt | SM-A | TK/SMA | -- | -- | -- | 1 | -- | -- | -- |
| | SM-B | TK/SMB | -- | -- | -- | 3 | -- | -- | -- |
| Microtracer ST | ST-C | TK/ST/B | -- | -- | 1 | 1 | DS1 | PGS2 | BGS1 |
| | ST-CT | TK/ST/OP | -- | -- | 1 | 2 | DS3 | PGS2 | BGS2 |
| Microtracer EMTS | EMTS-C | TK/EMTS/B | -- | -- | 1 | 1 | DS1 | PGS2 | BGS1 |
| | EMTS-CS | TK/EMTS/O | -- | -- | 1 | 3 | DS3 | PGS2 | BGS2 |
| | EMTS-CF | TK/EMTS/O | -- | -- | 1 | 3 | DS3 | PGS2 | BGS2 |
| Microtracer EMTF | EMTF-C | TK/EMTF/B | -- | -- | 1 | 1 | DS1 | PGS2 | BGS1 |
| | EMTF-CF | TK/EMTF/O | -- | -- | 1 | 2 | DS2 | PGS2 | BGS1 |
| Minitracer MTSS | MTSS-C | TK/MT/B | -- | -- | 2 | 2 | DS2 | PGS4 | BGS1 |
| | MTSS-CS | TK/MT/B | -- | -- | 2 | 3 | DS3 | PGS4 | BGS2 |
| | MTSS-CF | TK/MT/B | -- | -- | 2 | 3 | DS3 | PGS4 | BGS2 |
| Minitracer MTF | MTF-C | TK/MT/B | -- | -- | 1 | 1 | DS2 | PGS4 | BGS1 |
| | MTF-CF | TK/MT/B | -- | -- | 1 | 2 | DS3 | PGS4 | BGS2 |
| Minitracer MTFJ | MTFJ-C | TK/MTFJ/B | -- | -- | 1 | 1 | DS1 | PGS1 | BGS1 |
| | MTFJ-CF | TK/MTFJ/OF | -- | -- | 1 | 2 | DS2 | PGS1 | BGS1 |
| Powerheat HT | HT | TK/HT | -- | -- | 1 | 1 | DS1 | PGS2 | BGS1 |
| Powerheat AHT | AHT | TK/AHT | -- | -- | 3 | 3 | DS2 | PGS1 | BGS1 |
| Powerheat PHT | PHT-N | TK/PHT | -- | -- | 2 | 2 | DS2 | PGS1 | BGS1 |
| | PHT-NF | TK/PHT/OF | -- | -- | 2 | 3 | DS3 | PGS3 | BGS2 |
| Heat Tracer HTS | HTS-C | TK/HTS/B | -- | -- | -- | -- | -- | -- | Contact your |
| | HTS-CS | TK/HTS/O | -- | -- | -- | -- | -- | -- | Heat Trace |
| | HTS-CF | TK/HTS/O | -- | -- | -- | -- | -- | -- | Rep. |
| Snowflow SFP | SFP-T | TK/SFP | -- | -- | -- | -- | -- | -- | -- |
| | SFP-CT | TK/SFP/O | -- | -- | -- | -- | -- | -- | -- |

IMPORTANT NOTE! FOR STRIPFREE POWER (SF-P), STRIPFREE TEE (SF-T) & STRIPFREE END (SF-E). IF THE PIPE TEMPERATURE IS ABOVE 60 Deg C, SF-P, SF-T & SF-E MUST BE POSITIONED OUTSIDE THE INSULATION

The above list is provided for the majority of heating cables manufactured by Heat Trace. Termination kits for, for example, Longline heating cables are not shown as these tend to be specific to the style of Longline provided.

ibemo Kazakhstan Ltd. 09302 Republic of Kazakhstan , West Kazakhstan Oblast, Aksai, Pramzone, BKKS office complex
Tel.: +7(71133) - 93077 ; Fax: +7 (71133) - 93074; e-mial: info-kz@ibemo.de

The information given herein, including drawings, illustrations and schematics (which are intended for illustration purposes only), is believed to be reliable. However, Heat Trace Ltd makes no warranties as to its accuracy or completeness and disclaims any liability in connection with its use. Users of Heat Trace Ltd products should make their own evaluation to determine the suitability of each such product for specific applications. In no way will Heat Trace Ltd be liable for any damages arising out of the misuse, resale or use of the product.