



## Merlin Gerin

LV switch-disconnectors

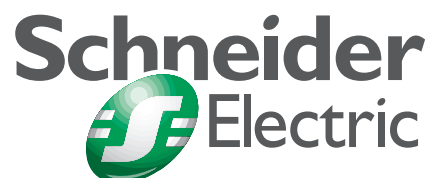
Interpact 40 to 2500A



**Merlin Gerin**

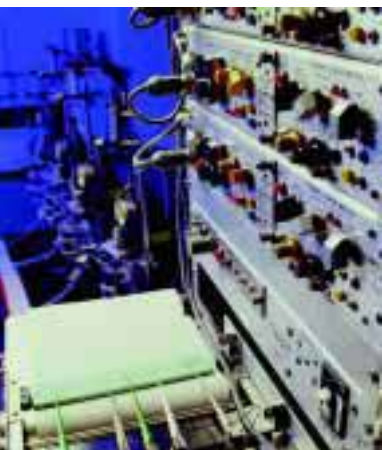
**Modicon**

**Telemecanique**





# LV switch-disconnectors



**Interpact from 40 to 2500 A** **4**

---

**Typical low-voltage applications** **6**

---

**Compact from 80 to 1250 A** **7**

---

**Masterpact from 800 to 6300 A** **8**

---

**Product Panorama** **9**

---

**Functions and characteristics** **17**

---

**Installation and connection** **47**

---

**Technical details** **71**

---

**Product references** **77**

---

## LV switch-disconnectors Interpact from 40 to 2500 A

### Interpact INS from 40 to 630A



Interpact INS switch-disconnector  
from 40 to 80 A



Interpact INS switch-disconnector  
from 100 to 160 A

- Circuit control and isolation.
- Industrial devices with modular profile from 40 to 160A.
- Industrial devices from 100 to 2500 A for installation in functional and universal switchboards.
- Front or lateral handle are available on the same device (up to INS250).



Interpact INS250  
switch-disconnector



Interpact INS switch-disconnector  
from 400 to 630 A

### Interpact IN from 1000 to 2500 A



Interpact IN1600 switch-disconnector

## Compact from 80 to 1250 A (See Compact catalogue)



Compact switch-disconnector

- Circuit control and isolation.
- Additional functions for safety, remote control and convenience:
  - Earth-fault protection.
  - MN/MX auxiliary releases.
  - Motor mechanism.
  - Ammeter.
  - Source changeover.
- Homogeneity with respect to Compact circuit breakers in the same switchboard.



Compact switch-disconnector equipped with Vigi earth fault protection module



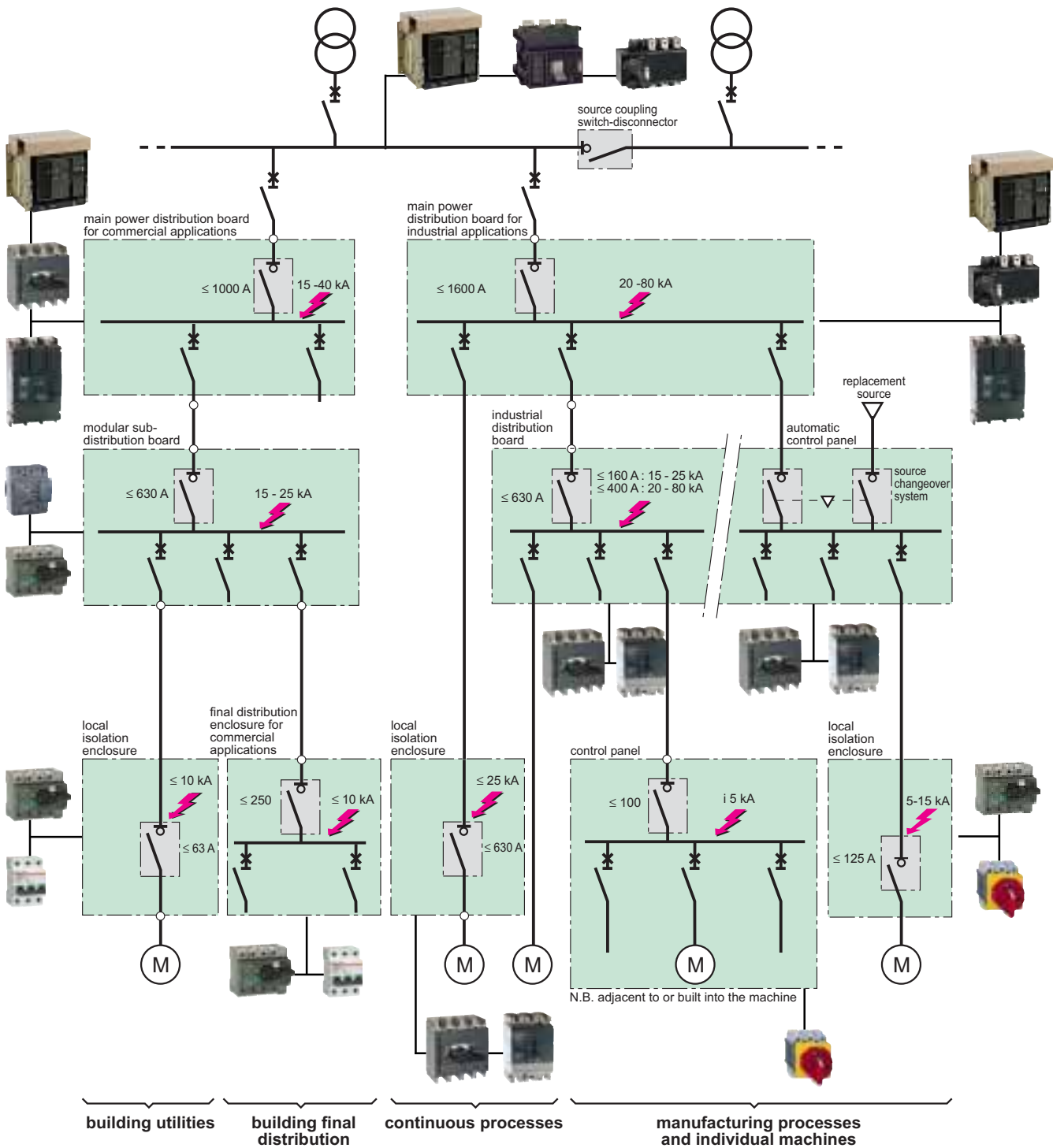
Compact switch-disconnector with motor-mechanism



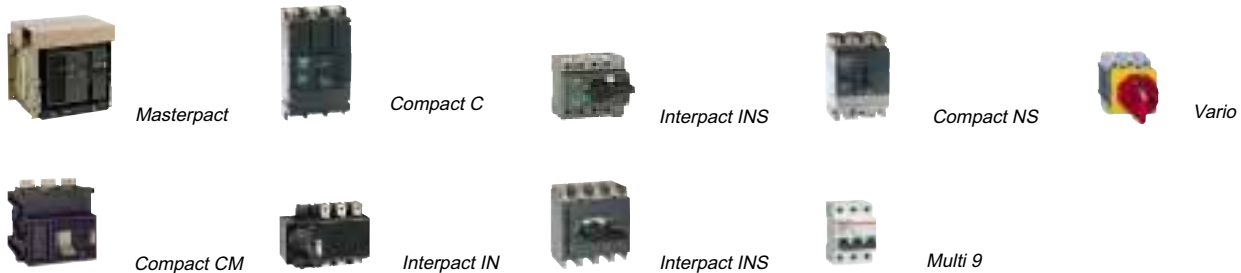
MN/MX voltage release

# LV switch-disconnectors

## Typical low-voltage applications



### Legend





Masterbloc main power distribution board with Masterpact switch-disconnectors



Prisma P & G sub-distribution board with Interpact switch-disconnectors



Isobar 4 final distribution boards using Interpact at 250Amp

### Switch disconnectors for standby applications

- Merlin Gerin Masterpact, Compact CM and Interpact IN switch-disconnectors.
- Current ratings: up to 6300A.
- Standards: IEC 947-3 BS EN 60947-3, EN 60947-3.
- Catalogue: Masterpact, Compact CM, Interpact (see following pages).

### Main power distribution boards for commercial and industrial applications

- Merlin Gerin Masterpact, Interpact INS/IN and Compact C switch-disconnectors.
- Current ratings: 400 to 1000 A for commercial applications and 400 to 1600 A for industrial applications.
- Standards: IEC 947-3 BS EN 60947-3, EN 60947-3.
- Catalogue: Masterpact, Compact, Interpact (see following pages).

### Industrial switchboards and automatic-control panels

- Merlin Gerin Interpact INS and Compact NS switch-disconnectors.
- Current ratings: up to 400A.
- Standards: IEC 947-3 BS EN 60947-3, EN 60947-3.
- Catalogue: Compact, Interpact (see following pages).

### Sub-distribution boards for modular products

- Merlin Gerin Interpact INS and NG 125 switch-disconnectors.
- Current ratings: up to 160A.
- Standards: IEC 947-3 BS EN60947-3, EN 60947-3.
- Catalogue: Multi 9, Interpact (see following pages).

### Local isolation enclosures

- Merlin Gerin switch-disconnectors:
  - Interpact INS and Multi 9 (low ratings).
  - Interpact INS and Compact NS.
- Telemecanique switch-disconnectors (12 to 175A).
- Current ratings: up to 63 A (low ratings), up to 630A (industry).
- Standards: IEC 947-3 BS EN 60947-3, EN 60947-3.
- Catalogue: Compact, Interpact (see following pages), Telemecanique.

### Small distribution enclosures for commercial applications

- Merlin Gerin Interpact INS and Multi 9 switch-disconnectors.
- Current ratings: up to 63A
- Standards: IEC 947-3 BS EN 60947-3, EN 60947-3.
- Catalogue: Multi 9, Interpact (see following pages).

### Control panels

- Telemecanique Vario switch-disconnectors.
- Current ratings: up to 60/80A.
- Standards: IEC 947-3 BS EN 60947-3, EN 60947-3.
- Catalogue: Telemecanique.

### Local isolation enclosures (manufacturing processes and individual machines)

- Interpact INS and Telemecanique Vario switch-disconnectors.
- Current ratings: up to 63/80 A (Vario) and > 63/80 A (Interpact INS).
- Standards: IEC 947-3 BS EN 60947-3, EN 60947-3.
- Catalogue: Interpact (see following pages), Telemecanique.

## LV switch-disconnectors Masterpact from 800 to 6300A (See Masterpact catalogue)

---

- Circuit control and isolation.
- High making capacity and electrodynamic withstand.
- Additional functions for safety and convenience:
  - MN/MX auxiliary releases.
  - XF closing release.
  - Motor mechanism.
  - Source changeover.



Masterpact switch-disconnector