

- *Low initial cost*
- *Lower thermal insulation costs*
- *Lower steam pressure*
- *Easy to maintain*
- *Rapid heat raising*
- *System solution*

FEATURES

KONDUCT thermal transfer cement has been successfully supplied for over 40 years worldwide to the Chemical Processing, Petroleum, Power, Steel and other strategic industries.

KONDUCT is most commonly used as a heat transfer medium on steam tracer lines and external plate coil systems, producing dramatic improvement in heat transfer, resulting in reductions in the number of tracer lines and the size of plate coils required.

Use of KONDUCT can increase the efficiency of steam tracing up to a similar order to that obtainable by steam jacketing, but at much less cost.

Similar results are also possible when using KONDUCT in conjunction with external cooling systems.

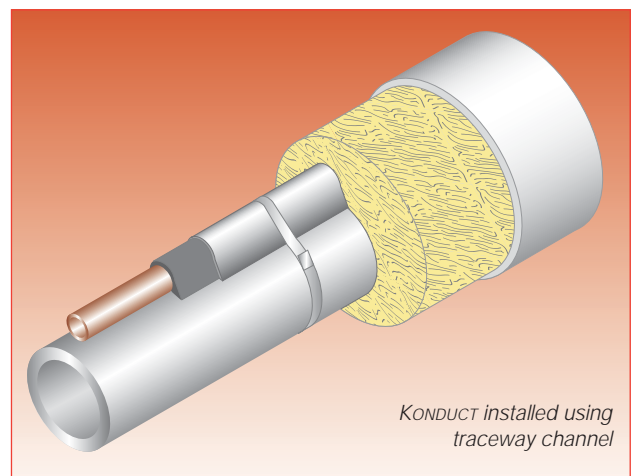
KONDUCT is simple to apply, and safe to handle.

KONDUCT AIDED STEAM TRACING

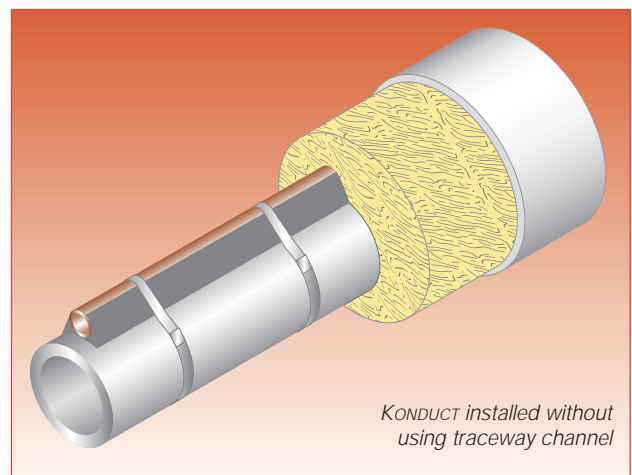
Steam tracing of pipework and vessels is generally inefficient and difficult to control when compared with efficient electric heat tracing. However, the efficiency of steam tracing may be dramatically improved by the use of Heat Trace's KONDUCT heat transfer cement system.

OPTIONS

- KC1** KONDUCT No. 1 - This is used for 95% of all applications being suitable for a temperature range of -75°C (-100°F) to 600°C (1100°F). Hard when cured.
- KC5** KONDUCT No. 5 - This is a non-setting version of KONDUCT No. 1 and is used where vibration is likely. It is suitable for a temperature range of -75°C (-100°F) to 100°C (212°F).



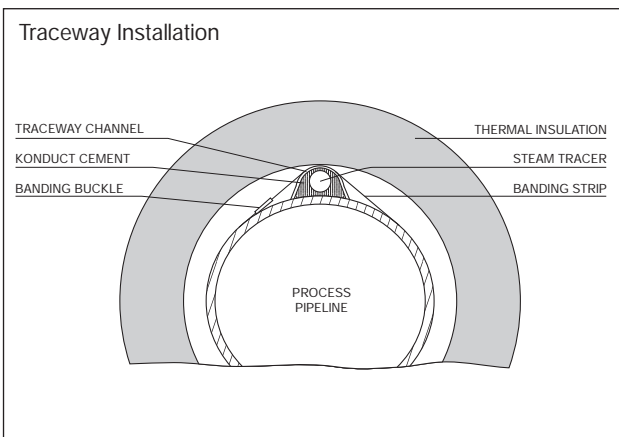
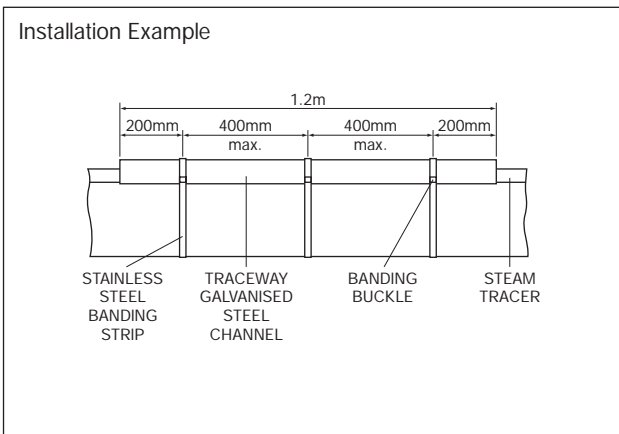
KONDUCT installed using traceway channel



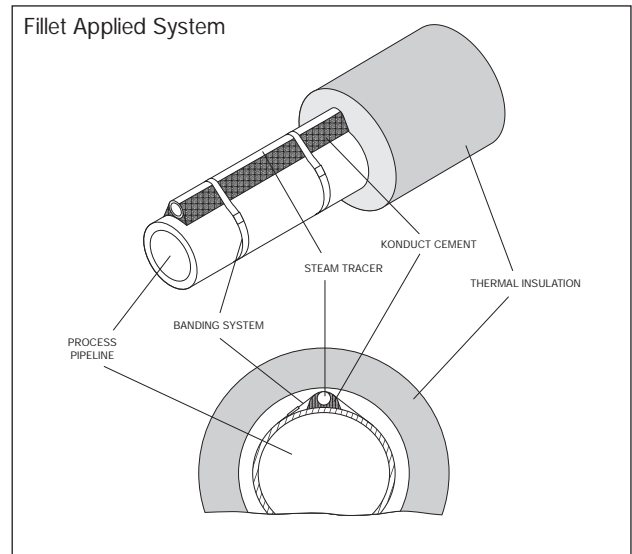
KONDUCT installed without using traceway channel

SPECIFICATION

	KC1	KC5
MAXIMUM EXPOSURE TEMPERATURE	600°C (1100°F)	100°C (212°F)
MINIMUM EXPOSURE TEMPERATURE	-75°C (-100°F)	-75°C (-100°F)
MINIMUM APPLICATION TEMPERATURE	0°C (32°F)	0°C (32°F)
THERMAL CONDUCTIVITY	170W/m°C	
DENSITY	1489Kg/m ³ Dry 1830Kg/m ³ Wet	
SPECIFIC HEAT	0.84 x 10 ³ JKg ⁻¹ K ⁻¹	
SHRINKAGE	Less than 1%	
STRENGTH:		
Compressive	63/77Kg/cm ²	
Tensile	12/14Kg/cm ²	
Modulus of Rupture	92Kg/cm ²	
SHELF LIFE	Indefinite in closed container at 5°C - 35°C	
LIFE EXPECTANCY	Virtually no deterioration due to normal ageing	
PACK SIZE	20Kg drums	



SYSTEM COMPONENTS



ORDERING INFORMATION

Cement

KONDUKT Type KC1 or KC5

Note¹: KC5 is non-setting

Note²: Kondukt is only available in 20kg drums

Traceway Channel

Traceway channels are supplied in 1.2m lengths

GT1 for use with 10mm (3/8") or 15mm (1/2") copper steam tracer tubes

GT2 for use with 22mm (3/4") copper or 15mm (1/2") NB steel tracer tubes

GT3 for use with 28mm (1") or 22mm - 28mm (3/4" - 1") steel tracer tubes

Banding System

PFS/S Stainless steel banding strip (12.5mm wide x 30m long)

BUC/S Stainless steel banding buckles (100 per box)

BT Banding tool

Paint

It is recommended that a primer paint for application to aluminium pipework in order to establish a good bond for the heat transfer cement.