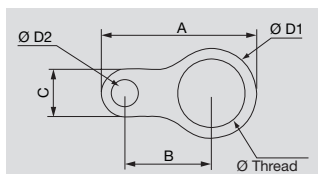


Accessories - earthing rings



Earthing rings are particularly useful in situations where the shielding of a cable is attached to the cable gland and this is required to have the same potential as the other glands of a housing.



Technical data

Material	Brass, nickel-plated
----------	----------------------

Note

Ordering data

Type	Thread-size	A	B	C	D1	D2	Qty.	Order No.
metric								
EA-RING MS/M 16	M 16 x 1.5	48.75	30	13	24.5	6.75	20	1736480000
EA-RING MS/M 20	M 20 x 1.5	53.8	33	13	28.6	7	20	1736490000
EA-RING MS/M 25	M 25 x 1.5	61.5	36	17	34	10.5	20	1736500000
EA-RING MS/M 32	M 32 x 1.5	73	41	22	42	12.2	20	1736510000
EA-RING MS/M 40	M 40 x 1.5	86.5	44.5	30	54	13.5	10	1736520000
EA-RING MS/M 50	M 50 x 1.5	111.5	58	40	67	13.5	10	1736530000
EA-RING MS/M 63	M 63 x 1.5	125.5	67	40	77	13.5	10	1736540000
EA-RING MS/M 75	M 75 x 1.5	137.5	73	40	89	13.5	10	1736550000

Further versions on request