



Cable tray system, walkable



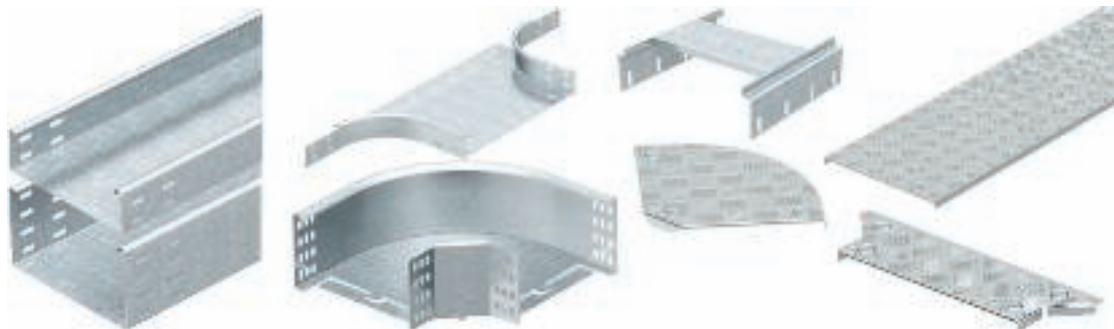
Cable tray system, walkable, non-slip

Cable tray, type SKSU	
Type SKSU	
Side height:	60, 110 mm
Surface:	FS, FT
Fittings:	According to side heights
Connecting parts	According to side heights
Classification	According to DIN EN 61537



Optimised for worldwide use in systems' construction and in the automotive industry with its automated production lines, the walkable cable tray system from OBO Bettermann is ready for any task. The non-slip, impact-resistant aluminium profile-reinforced covers and the unperforated cable trays, type SKSU, which serve as the base, are absolutely suitable for the rough and tumble of everyday work. Comprehensive accessories, such as bends, add-on tees, connectors with cover supports, barrier strips and all the fastening materials optimise this system for universal use and ensure a flexible system, which allows low-cost installations.

System components



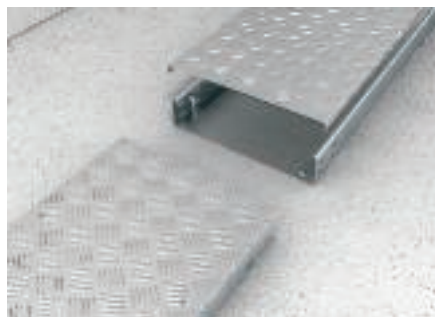
Cable tray, unperforated, type SKSU, walkable and non-slip aluminium checker plate cover, barrier strip, 90° bend, add-on tee, fastening material

Walkable cable tray system application



Walkable cable tray system, stand off on U profile structure.

Floor application



Installation of the walkable cable tray system directly on the ground.

Stand off application



Installation and fastening of the walkable cable tray system for floor stand-off.

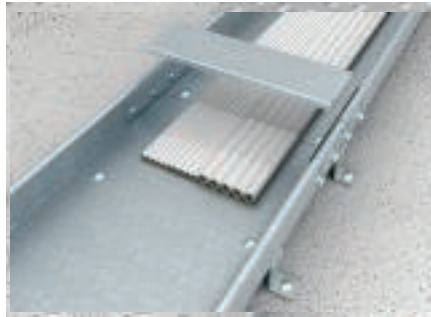
Cable tray system, walkable

Straight connection



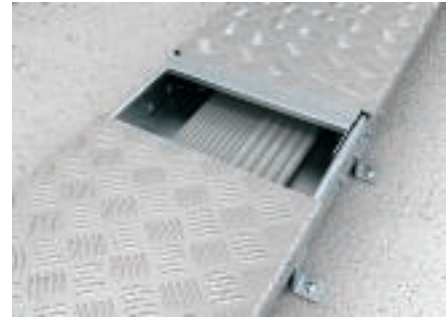
Creation of a straight cable tray connection using the combined straight connector / cover support, type RVS.

Installation of cover support



Insertion of the cover support, type RVS, on the straight connectors after cable routing.

Installation of cover support



Installation of an additional cover support in the centre of the cable tray for additional cover stabilisation from a width of 400 mm.

Barrier strip fastening



Installation of a barrier strip within the tray to separate cables and/or circuits and for additional cover stabilisation from a width of 400 mm.

Installation of bend



Bends of width 100 to 300 mm are pushed into the rail on the one side and over the connector on the other; standard connectors are required for widths 400 to 600 mm.

Installation of add-on tee



To install the add-on tee, type RAA, separate the cable tray rail and insert it in the add-on tee and screw it tight.

Preparation for cover fastening



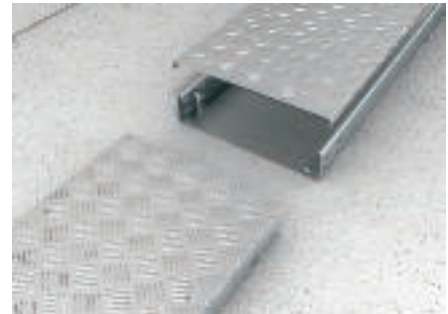
Preparation of cover fastening.

Cover mounting



Quick mounting of the cover through simple clipping on the cable tray.

Direct floor mounting



Installation of the walkable cable tray system directly on the ground with nail anchor, type FNA, or anchor bolt, type FAZ II.

Standoff



Floor stand-off of the walkable cable tray system with the stand off bracket, type DBL.

Mounting variant



Floor stand-off of the walkable cable tray system with special structure made of U supports. Mounting variant for possible installation of additional items beneath the cable tray.

Complete installation

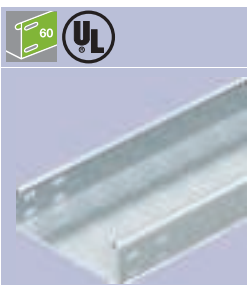


Illustration of complete installation of the walkable cable tray system.



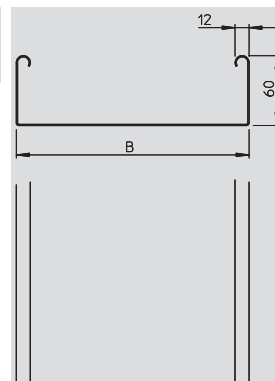
Cable tray system, walkable

Cable tray SKSU 60



Type	Width mm	Plate thickness mm	Length mm	Usable cross- section cm ²	perm. load:				Weight borders	Item No.
					1,5m kN/m	2,0m kN/m	2,5m kN/m	3,0m kN/m		
SKSU 610	100	1.5	3000	58	2.6	1.9	1.1	0.55	286.000	6063 23 4
SKSU 620	200	1.5	3000	118	2.6	1.9	1.1	0.55	400.000	6063 23 6
SKSU 630	300	1.5	3000	178	2.6	1.9	1.1	0.55	516.000	6063 23 8
SKSU 640	400	1.5	3000	238	2.6	1.9	1.1	0.55	639.000	6063 95 0
SKSU 650	500	1.5	3000	298	2.6	1.9	1.1	0.55	756.700	6063 24 1
SKSU 660	600	1.5	3000	358	2.6	1.9	1.1	0.55	877.000	6063 27 6
SKSU 610	100	1.5	3000	58	2.6	1.9	1.1	0.55	303.000	6064 30 7
SKSU 620	200	1.5	3000	118	2.6	1.9	1.1	0.55	427.300	6064 35 3
SKSU 630	300	1.5	3000	178	2.6	1.9	1.1	0.55	555.000	6064 40 9
SKSU 640	400	1.5	3000	238	2.6	1.9	1.1	0.55	687.000	6064 43 5
SKSU 650	500	1.5	3000	298	2.6	1.9	1.1	0.55	802.000	6064 51 5
SKSU 660	600	1.5	3000	358	2.6	1.9	1.1	0.55	929.700	6064 52 3

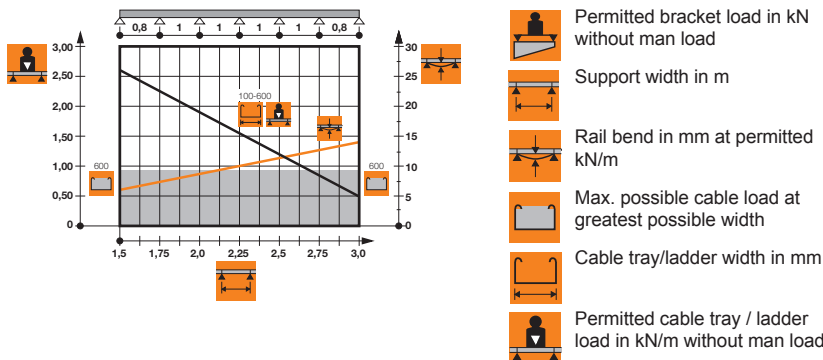
Price
€/m



SKS 60 = Heavy duty cable tray system, unperforated, with 60 mm side height.

The cable tray has connector perforations on both sides.
Straight connectors should be ordered separately and in the appropriate quantity.

Load diagram, cable tray, type SKSU 60



System accessories:

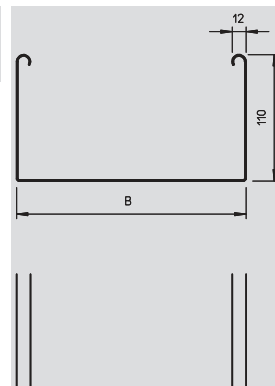
RLVK 60 Straight connector See page 146

Cable tray SKSU 110



Type	Width mm	Plate thickness mm	Length mm	Usable cross- section cm ²	perm. load:				Weight borders	Item No.
					1,5m kN/m	2,0m kN/m	3,0m kN/m	4,0m kN/m		
SKSU 110	100	1.5	3000	108	3.0	2.4	1.2	0.8	406.200	6063 40 3
SKSU 120	200	1.5	3000	218	3.0	2.4	1.2	0.8	524.000	6063 43 8
SKSU 130	300	1.5	3000	328	3.0	2.4	1.2	0.8	641.700	6063 45 4
SKSU 140	400	1.5	3000	438	3.0	2.4	1.2	0.8	759.500	6063 47 0
SKSU 150	500	1.5	3000	548	3.0	2.4	1.2	0.8	877.200	6063 49 7
SKSU 155	550	1.5	3000	603	3.0	2.4	1.2	0.8	932.000	6063 50 0
SKSU 110	100	1.5	3000	108	3.0	2.4	1.2	0.8	420.000	6064 79 5
SKSU 120	200	1.5	3000	218	3.0	2.4	1.2	0.8	551.000	6064 83 3
SKSU 130	300	1.5	3000	328	3.0	2.4	1.2	0.8	660.000	6064 88 4
SKSU 140	400	1.5	3000	438	3.0	2.4	1.2	0.8	823.000	6064 92 2
SKSU 150	500	1.5	3000	548	3.0	2.4	1.2	0.8	880.000	6064 96 5
SKSU 155	550	1.5	3000	603	3.0	2.4	1.2	0.8	988.000	6064 97 3

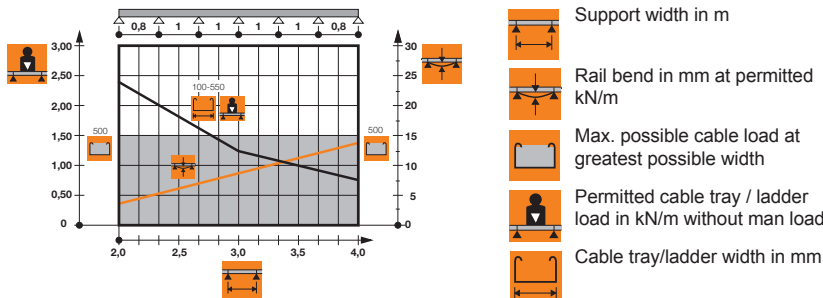
Price
€/m



SKS 110 = Heavy duty cable tray system, unperforated, with 110 mm side height.

The cable tray has connector perforations on both sides.
Straight connectors should be ordered separately and in the appropriate quantity.

Load diagram, cable tray, type SKSU 110

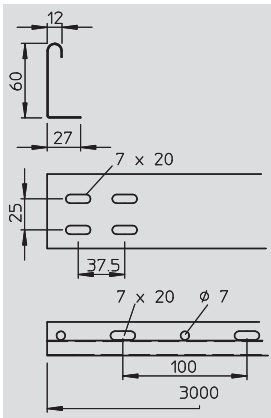


System accessories:

RLVK 110 Straight and angle connector See page 158

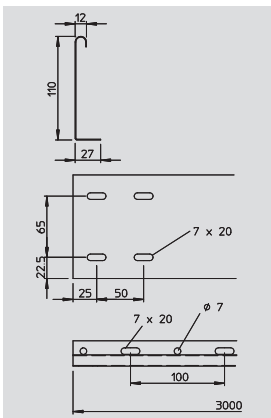
Cable tray system, walkable

Barrier strip



Type	Side height mm	Length mm	Pack. m	Weight borders	Item No. ST / FS	Price €/m
TSG 60	60	3000	45	57.300	6062 06 7	
TSG 60	60	3000	45	64.000	6062 32 6	

Barrier strip for separation of cables of different voltages or functions.

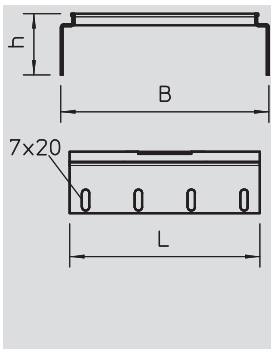


Type	Side height mm	Length mm	Plate thickness mm	Pack. m	Weight borders	Item No. ST / FS	Price €/m
TSG 110	110	3000	1	30	115.700	6062 12 1	
TSG 110	110	3000	1	30	115.700	6062 33 4	

Barrier strip for separation of cables of different voltages or functions.



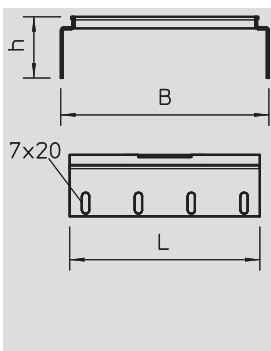
Straight connector set



Type	Width mm	Height mm	Dimension L mm	Pack. pcs	Weight kg/% pc	Item No. ST / DD	Price €/pc
RVS 60/10	100	60	180	5	28.000	6068 77 1	
RVS 60/20	200	60	180	5	57.000	6068 77 3	
RVS 60/30	300	60	180	5	85.000	6068 77 5	
RVS 60/40	400	60	180	5	113.000	6068 77 7	
RVS 60/50	500	60	180	5	141.000	6068 77 9	
RVS 60/60	600	60	180	5	169.000	6068 78 1	

Connector and ceiling support for the walkable cable tray system. The straight connectors are attached to the side rail of the cable tray and are fixed with the suitable screws, type FRS M6 x 12. Then the appropriate cover support is inserted. From a width of 400 mm, we recommend inserting additional cover supports in the centre of the cable tray.

The screw fastening ensures the continuity of the equipotential bonding.



Type	Width mm	Height mm	Dimension L mm	Pack. pcs	Weight kg/% pc	Item No. ST / DD	Price €/pc
RVS 110/10	100	110	180	5	76.000	6068 78 9	
RVS 110/20	200	110	180	5	89.000	6068 79 1	
RVS 110/30	300	110	180	5	102.000	6068 79 3	
RVS 110/40	400	110	180	5	115.000	6068 79 5	
RVS 110/50	500	110	180	5	128.000	6068 79 7	
RVS 110/55	550	110	180	5	135.000	6068 79 9	

Connector and ceiling support for the walkable cable tray system. The straight connectors are attached to the side rail of the cable tray and are fixed with the suitable screws, type FRS M6 x 12. Then the appropriate cover support is inserted. From a width of 400 mm, we recommend inserting additional cover supports in the centre of the cable tray.

The screw fastening ensures the continuity of the equipotential bonding.





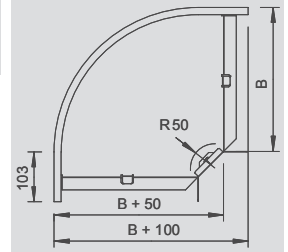
Cable tray system, walkable

90° bend



Type	Width mm	Pack. pcs	Weight kg/% pc	Item No.	
				ST	FS
RB 90 610	100	1	56.000	6043 21 6	
RB 90 620	200	1	95.000	6043 22 4	
RB 90 630	300	1	150.000	6043 23 2	
				ST / FT	
RB 90 610	100	1	60.000	7125 10 0	
RB 90 620	200	1	101.000	7125 22 0	
RB 90 630	300	1	160.000	7125 30 5	

Price
€/pc



90° bend, horizontal, for all cable tray types of 60 mm side height.

The fitting is shipped in an unmounted state.
Including appropriate fastening material.

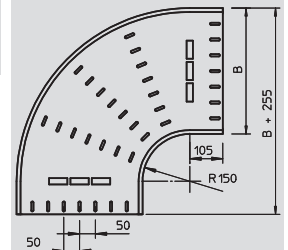
System accessories:

DFB 90 100-300 Cover for 90° bend See page 167



Type	Width mm	Pack. pcs	Weight kg/% pc	Item No.	
				ST	FS
RB 90 640	400	1	523.400	7001 29 0	
RB 90 650	500	1	683.400	7001 30 4	
RB 90 660	600	1	864.900	7001 31 2	
				ST / FT	
RB 90 640	400	1	570.500	7125 41 0	
RB 90 650	500	1	744.900	7125 52 6	
RB 90 660	600	1	942.700	7125 58 5	

Price
€/pc



90° bend, horizontal, for all cable tray types of 60 mm side height.

Fitting in round design. The interior radius of the fitting is 150 mm. Fastening materials should be ordered separately.

System accessories:

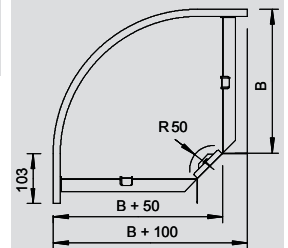
RLVK 60 Straight connector See page 146
DFB 90 400-600 Cover for 90° bend See page 167
SSLB Joint plate See page 163

90° bend



Type	Width mm	Pack. pcs	Weight kg/% pc	Item No.	
				ST	FS
RB 90 110	100	1	80.000	7001 89 4	
RB 90 120	200	1	140.000	7001 91 6	
RB 90 130	300	1	210.000	7001 93 2	
				ST / FT	
RB 90 110	100	1	85.000	7127 10 3	
RB 90 120	200	1	150.000	7127 22 7	
RB 90 130	300	1	230.000	7127 32 0	

Price
€/pc



90° bend, horizontal, for all cable tray types of 110 mm side height.

The fitting is shipped in an unmounted state.
Including appropriate fastening material.

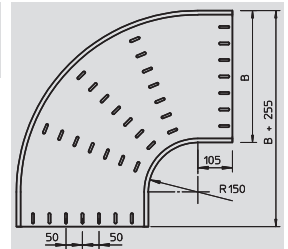
System accessories:

DFB 90 100-300 Cover for 90° bend See page 167



Type	Width mm	Pack. pcs	Weight kg/% pc	Item No.	
				ST	FS
RB 90 140	400	1	540.000	7001 94 0	
RB 90 150	500	1	700.000	7001 96 7	
RB 90 155	550	1	780.000	7001 97 5	
				ST / FT	
RB 90 140	400	1	575.000	7127 41 3	
RB 90 150	500	1	750.000	7127 49 9	
RB 90 155	550	1	840.000	7127 54 5	

Price
€/pc



90° bend, horizontal, for all cable tray types of 110 mm side height.

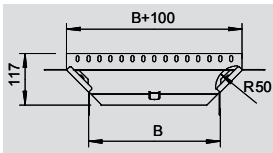
Fitting in round design. The interior radius of the fitting is 150 mm. Fastening materials should be ordered separately.

System accessories:

RLVL 110 Straight and angle connector See page 158
DFB 90 400-600 Cover for 90° bend See page 167
SSLB Joint plate See page 163

Cable tray system, walkable

Add-on tee



Type	Width mm	Pack. pcs	Weight kg/% pc	Item No. ST / FS	Price €/pc
RAA 610	100	1	35.000	6040 40 3	
RAA 620	200	1	40.000	6040 43 8	
RAA 630	300	1	50.000	6040 44 6	
				ST / FT	
RAA 610	100	1	38.000	7121 10 9	
RAA 620	200	1	43.000	7121 21 0	
RAA 630	300	1	55.000	7121 31 8	

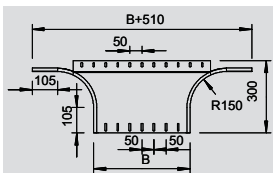


Add-on tee for horizontal and vertical use. For all cable tray types of 60 mm side height.

The fitting is shipped in an unmounted state. Including appropriate fastening material.

System accessories:

DFAA 100-300 Cover for add-on tee See page 168



Type	Width mm	Pack. pcs	Weight kg/% pc	Item No. ST / FS	Price €/pc
RAA 640	400	1	220.000	7002 39 4	
RAA 650	500	1	255.000	7002 41 6	
RAA 660	600	1	285.000	7002 43 2	
				ST / FT	
RAA 640	400	1	240.000	7121 40 7	
RAA 650	500	1	280.000	7121 50 4	
RAA 660	600	1	310.000	7121 60 1	



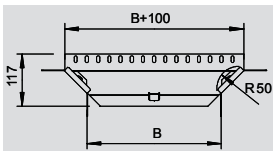
Add-on tee for horizontal and vertical use. For all cable tray types of 60 mm side height.

Fitting in round design. The interior radius of the fitting is 150 mm. Fastening materials should be ordered separately.

System accessories:

RLVK 60 Straight connector See page 146
 DFAA 400-600 Cover for add-on tee See page 168
 SSLB Joint plate See page 163

Add-on tee



Type	Width mm	Pack. pcs	Weight kg/% pc	Item No. ST / FS	Price €/pc
RAA 110	100	1	45.000	7002 63 7	
RAA 120	200	1	55.000	7002 65 3	
RAA 130	300	1	70.000	7002 68 8	
				ST / FT	
RAA 110	100	1	50.000	7123 11 6	
RAA 120	200	1	60.000	7123 21 3	
RAA 130	300	1	75.000	7123 31 0	

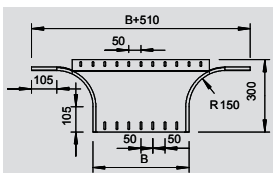


Add-on tee for horizontal and vertical use. For all cable tray types of 110 mm side height.

The fitting is shipped in an unmounted state. Including appropriate fastening material.

System accessories:

DFAA 100-300 Cover for add-on tee See page 168



Type	Width mm	Pack. pcs	Weight kg/% pc	Item No. ST / FS	Price €/pc
RAA 140	400	1	250.000	7002 69 6	
RAA 150	500	1	285.000	7002 72 6	
RAA 155	550	1	300.000	7002 73 4	
				ST / FT	
RAA 140	400	1	270.000	7123 39 6	
RAA 150	500	1	310.000	7123 50 7	
RAA 155	550	1	325.000	7123 55 8	



Add-on tee for horizontal and vertical use. For all cable tray types of 110 mm side height.

Fitting in round design. The interior radius of the fitting is 150 mm. Fastening materials should be ordered separately.

System accessories:

RLVL 110 Straight and angle connector See page 158
 DFAA 400-600 Cover for add-on tee See page 168
 SSLB Joint plate See page 163



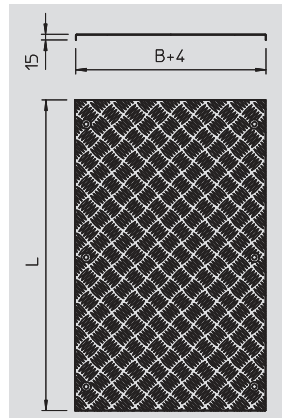
Cable tray system, walkable

Cover with chequer plate



Type	Width mm	Plate thickness mm	Length mm	Weight borders	Item No.
					Al
DRL BKS10	100	2.5	1000	240.400	6052 75 0
DRL BKS20	200	2.5	1000	388.500	6052 75 2
DRL BKS30	300	2.5	1000	571.000	6052 75 5
DRL BKS40	400	2.5	1000	754.000	6052 75 7
DRL BKS50	500	2.5	1000	1040.000	6052 75 9
DRL BKS55	550	2.5	1000	1141.500	6052 76 1
DRL BKS60	600	2.5	1000	1242.000	6052 76 3

Price
€/m



Corrugated aluminium lid, with clamping springs for screwless lid mounting, walkable.

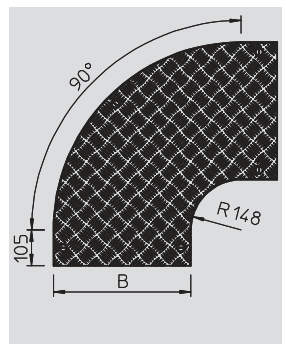
The cover can be used for side heights 60 and 110 mm.

Cover with chequer plate for 90° bend



Type	Width mm	Plate thickness mm	Pack. pcs	Weight kg/% pc	Item No.
					Al / DD
DFB BKS90	100	4.5	1	55.500	7130 74 1
DFB BKS90	200	4.5	1	135.200	7130 74 3
DFB BKS90	300	4.5	1	261.400	7130 74 5
DFB BKS90	400	4.75	1	618.000	7130 74 7
DFB BKS90	500	4.75	1	842.000	7130 74 9
DFB BKS90	550	4.75	1	964.000	7130 75 1
DFB BKS90	600	4.75	1	1093.000	7130 75 3

Price
€/pc



Cover for 90° bend with pre-mounted turn-buckle, walkable due to additional chequer plate.

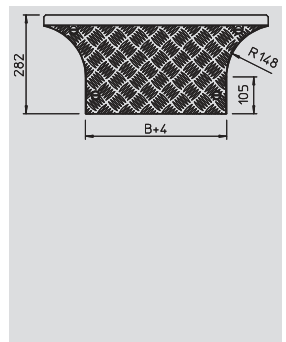
The cover can be used with fittings of all side heights.

Cover with chequer plate for add-on tee



Type	Width mm	Plate thickness mm	Pack. pcs	Weight kg/% pc	Item No.
					Al / DD
DFAA BKS	100	4.5	1	39.000	7131 45 0
DFAA BKS	200	4.5	1	65.000	7131 45 2
DFAA BKS	300	4.5	1	91.000	7131 45 4
DFAA BKS	400	4.75	1	247.000	7131 45 6
DFAA BKS	500	4.75	1	291.000	7131 45 8
DFAA BKS	550	4.75	1	318.000	7131 46 0
DFAA BKS	600	4.75	1	343.000	7131 46 2

Price
€/pc



Cover for add-on tee with pre-mounted turn-buckle, walkable due to additional chequer plate.

The cover can be used with fittings of all side heights.